

IS Devolved LCFG “State of the Nation”

ITPF November 28th 2008

Kenny MacDonald, IS

K.MacDonald@ed.ac.uk



Agenda

- Brief description of the devolved service
- Suggested improvements
- Discussion of some usage statistics
- Shared configuration consequences and opportunities
- Support models

What do you get?

- Master servers managed by IS
 - Optional local slave server
- Four subversion repositories
 - “policies”, “computers”, “packagelists”, “pie”
 - Read only web view, including RSS
 - EASE cosign authenticated
 - Commit email list
- Shared and private package repositories
 - Optional local mirror
- PIE build service

Timed releases

- www.lcfg.org release new 'lcfg' and 'ed' layer configurations every Thursday
- 'MDPTESTING' automatically tracks upstream release
- DST write release notes on Friday
 - [Wiki page](#)
 - Comments and actions recorded
- 'MDPSTABLE' tracks upstream release on Tuesday

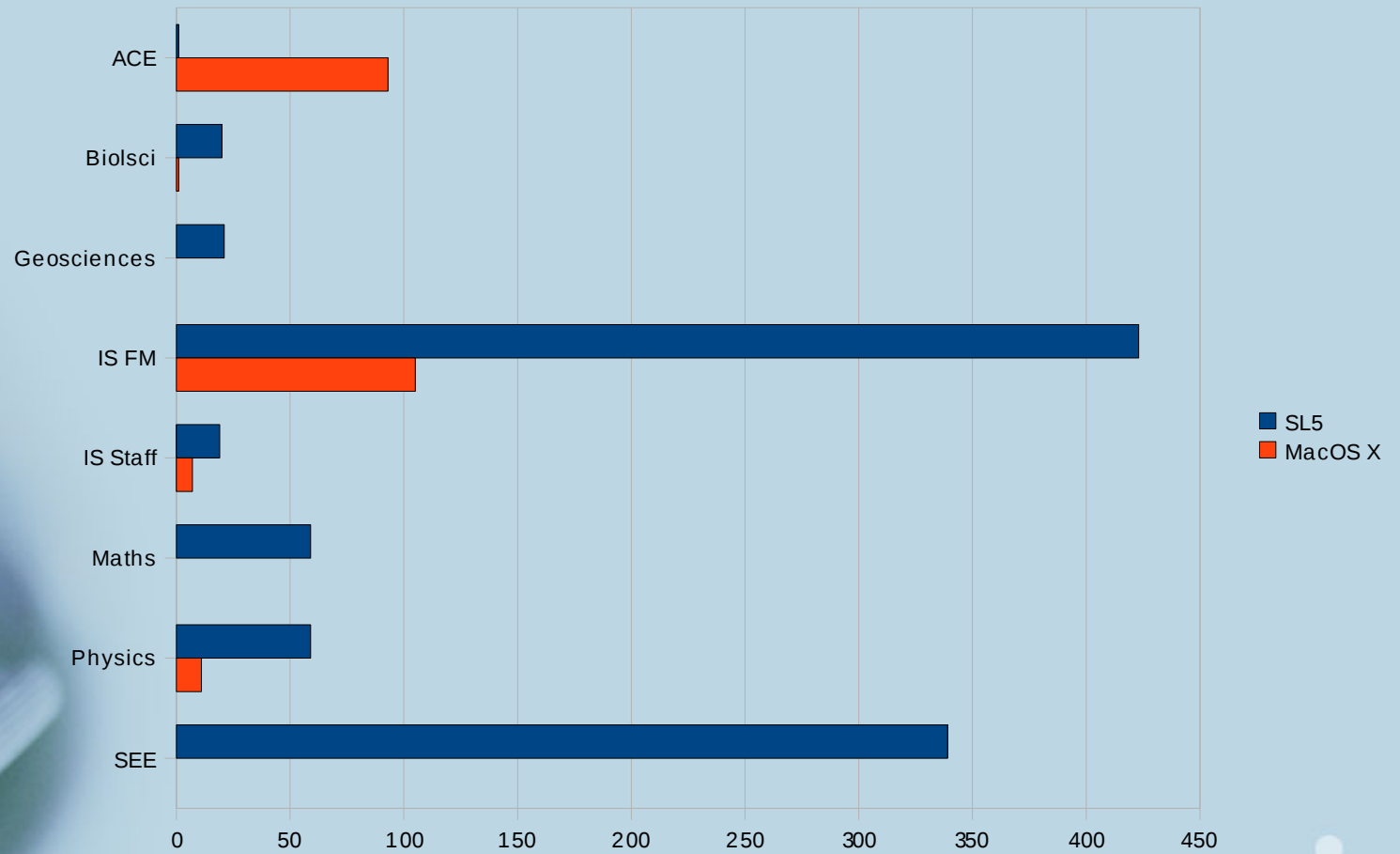
Missing features

- Web view of 'lcfg' and 'ed' layers
- Web view of server status
- Devolved release management
- Dependency browsing
- Option status
 - Published, private, supported, unsupported
- Documentation
- Clear support model

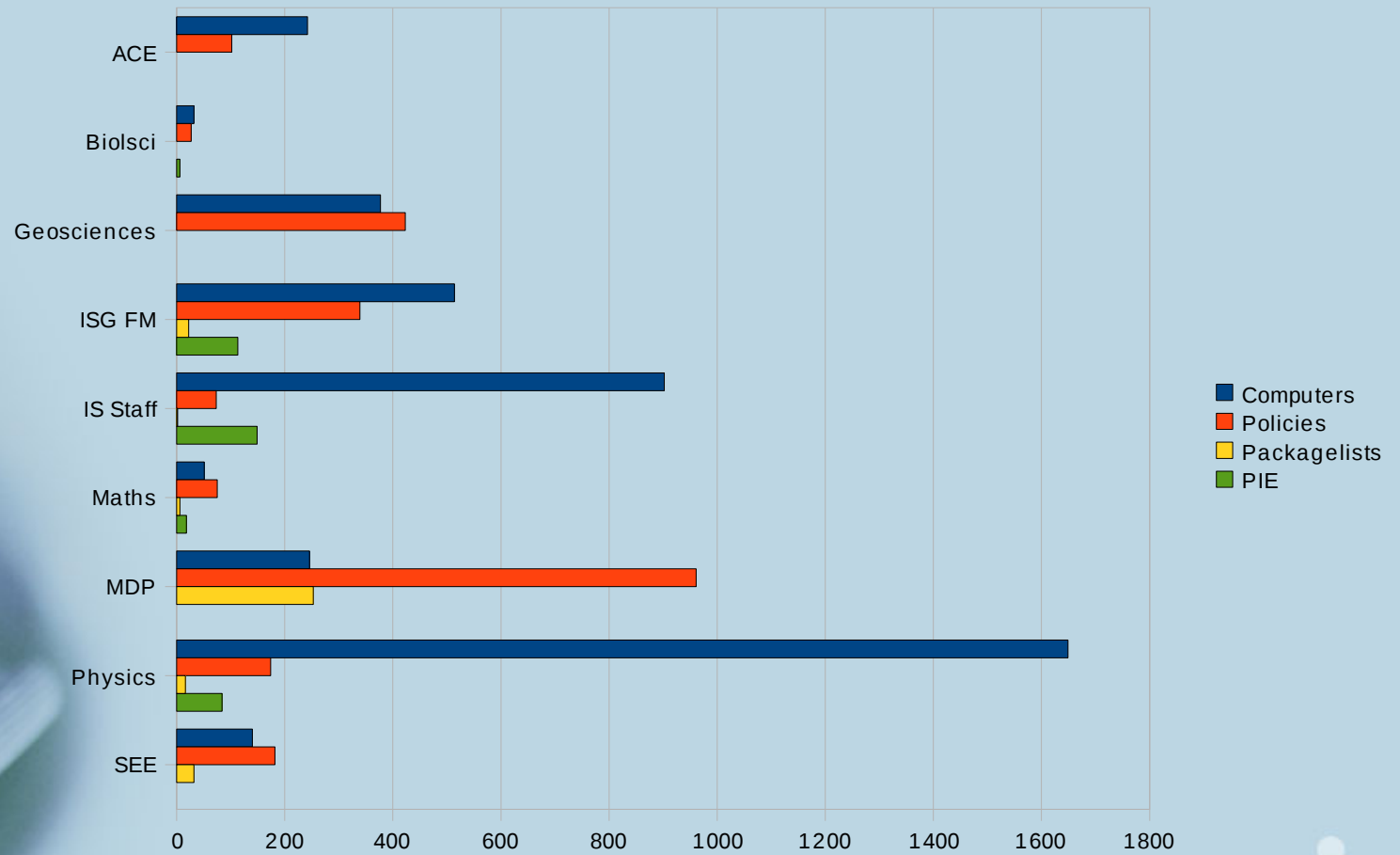
Who is using it?

- IS
 - The service is “self hosting”
 - Facility Managed and School Linux and MacOS X clients (Open Access Labs, etc.)
- ACE
- EPCC
- Geosciences
- Maths
- SEE

Clients



Commits



Standardisation

- So far ...
 - build system (PIE)
 - Operating System (Scientific Linux 5)
 - configuration system (LCFG)
- What else?
 - EASE authentication
 - Oracle e-Diary
- What next?

Why standardise?

- **Only where appropriate**
- Cheaper
- Supportable
- User demand
- UoE IT Strategy



Shared Configuration Space

- All Schools can read and “use” everyone else’s configuration
 - Inter-School communication and dependencies?
- All uploaded packages discoverable
 - Notification email
 - Private packages not downloadable
- DST read all commit lists
 - Timely support
 - Overview - information overload?



Devolved Ownership with Shared Use (Live Configuration)

- School A creates option
- School B discovers option
- School B includes option
- School A doesn't know that
- School A changes option
- School B didn't approve change
- School B clients change/break
- School B users upset



Devolved Ownership with Copied Use (Live Configuration)

- School A creates option
- School B discovers option
- School B copies option
- School B includes option
- School A changes option, and/or
- School B changes option
- Two different options to maintain



Central Development and Ownership (Live Configuration)

- School A requests option
- Centre prioritises request
- School A creates option
- School A includes option
- Centre finally creates option
- Migration effort for School A
- School B asks Centre to support option

Shared Development and Ownership (Managed Releases)

- School A creates option in development branch
- School B tests and improves option
- Centre notices and improves option
- Centre manages release
 - How?
- Any School includes option



Issues Not Addressed

- Planning
 - What's worth doing?
- Coordinating effort
 - Who's doing what?
- Conflicts
 - How to resolve?

IS Support

- Facilitate community
 - Manage infrastructure
 - Offer consultancy
 - Maintain commodity configuration
 - Active overview
 - Host planning
- Or ... ?



Open Discussion ...

